

# Kenny Parent Newsletter

March 2015

## Spring Break Activities

Spring Break is coming up soon, starting with Friday March 27th and then continuing Monday March 30th– Friday April 3rd. Make sure to make any schedule changes for Spring Break by Friday March 13th. Here are our plans for these days:



**Fri 3/27:** Zero Gravity Trampoline Park 11am-3pm

**Mon 3/30:** Make your own car for the Drive-in Movie on Wednesday (onsite)

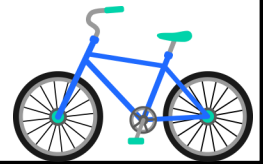
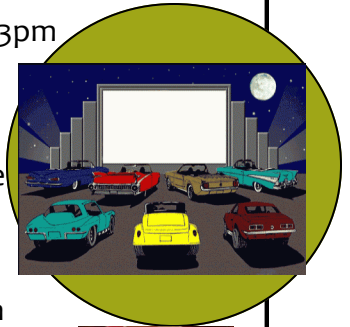
**Tue 3/31:** Bell Museum-Visit the ExploraDome and take a Discovery tour 11:15am-2:45pm

**Wed 4/1:** Drive in Movie Day– Watch a movie on our big screen, while relaxing in your own homemade vehicle with a refreshing snack

**Thurs 4/2:** Neighborhood Bike Day! Bring your bicycle or scooter and a helmet. There will be an option for a longer ride to the creek or Lake Harriet for 3rd-5th graders and a biking course in the parking lot for everyone!



**Fri 4/3:** Dodge Nature Center 11am-2:30pm



## Summer Program Registration

Summer Registration starts Monday March 16th at Noon. The summer program for Kenny will be located at Windom School this summer. The coordinators will be Devin & Megan. The location will host students from Windom, Kenny and Armatage.

Here is a link to the Summer Calendar :

[http://mplskids.mpls.k12.mn.us/uploads/summer\\_2015calendar.pdf](http://mplskids.mpls.k12.mn.us/uploads/summer_2015calendar.pdf)

If you have questions, please contact Devin Lazo: [devin.lazo@mpls.k12.mn.us](mailto:devin.lazo@mpls.k12.mn.us)

### Fall Registra-

Fall school year 15-16 registration will begin in Mid April. Look for email updates and a big poster with a count down starting the first week back from Spring Break !!

### Get Involved

MPLS Kids has a Parent Advisory council (PAC) that meets once a month. Our current parent representative is Ann Marshik. If you are interested in getting involved, or you have a topic you would like her to bring to the next PAC meeting, you can email her @

[annmarshik@gmail.com](mailto:annmarshik@gmail.com)

### Kids Welcome:

Before School 6:30-9:30  
AM Kindergarten 11:00-2:45  
After School 2:15-6:00



MINNEAPOLIS PUBLIC SCHOOLS  
Urban Education. Global Citizens.

Minneapolis Kids  
Minneapolis Community Education

MPLSKIDS.MPLS.K12.MN.US

5720 EMERSON AVE SOUTH 55419



[oOrlee.smull@mpls.k12.mn.us](mailto:oOrlee.smull@mpls.k12.mn.us)  
Rm121 :612-668-3344  
Site Cell: 612-919-2000 (Field Trips only)  
Main Office: 612-668-3890  
Main Office Fax: 612-668-3895

## Important Information

### Afternoon Attendance Policy:

Please be sure to let staff for the know if your child will be absent day. We have to be very strict about finding every child upon arrival each day so that no one goes home on a bus to an empty home. If your child does not arrive on a day that they are signed up for the program, we will search the building and call you until we know the location and safety of the child. This takes a lot of staff time away from the other children, so please help us avoid this by calling or emailing before Noon to let us know of an absence from the afternoon program. #612-668-3344

Orlee.smull@mpls.k12.mn.us

**Late Pick-up Policy:** Minneapolis Kids charges \$1 for every minute past 6pm for late pick-up. Care will be terminated if there are 3 late Pick-ups. If you know that you are going to be late, please find an alternate pick-up & notify Minneapolis kids of the change. We appreciate you respecting our schedule, as we have obligations after work as well.

**Early Drop-off:** MPLS Kids Opens at 6:30am. Students will not be admitted into the building until 6:30am. When teachers arrive early, they are there to set-up and prepare for the day and are unable to look after children.

**Allergies and Medication:** We require a written consent form signed by parent/guardian and physician in order to administer any medications. This includes prescribed and over-the-counter medications. Medicine must be in the original container with the original label. Please talk to your site coordinator if you need a con-



## And Don't Forget...

**Change to Pick-up Policy:** You are welcome to have family or friends pick-up your child, but please be sure to alert the MPLS Kids staff ahead of time with the alternative pick-up person's name and the date of pick-up. With our new IPAD sign-out system you will also need to go into your That's Community Ed Account and add their name to your authorized Pickup list.

\*Please remind them to bring their ID, as we will always ID any new pick-ups.

Orlee.smull@mpls.k12.mn.us



**Schedule Changes & Billing:** If you need to make changes to your child's schedule or have a question about billing, please direct your inquiries to the MPLS Kids Central Office

@ 612-668-3890

Mplskids@mpls.k12.mn.us

**To Enroll for Non School Days:** You can find a list of the dates that MPLS Kids is closed and Non School day dates on the MPLS Kids Kenny webpage. Enrollment for Non School days is separate from school days; check with the MPLS Kids main office for enrollment date. Be aware that space on Non School days is limited do to staffing.

**Send Appropriate Clothing:** There will be many opportunities for the children to go outside. Make sure to send appropriate clothing and shoes every-day. Flip flops are not allowed on the playground so please send tennis shoes or other good play shoes every day. This is also required in the gym.



**Keep Toys at Home:** We allow children to bring one toy from home only on designated days. We ask that you do not allow children to bring toys from home on any other day.

Our Mission: To provide high quality school age child care for families. We offer a safe, nurturing, educational and recreational experience where children are encouraged to pursue interests and develop friendships, independence, and confidence.